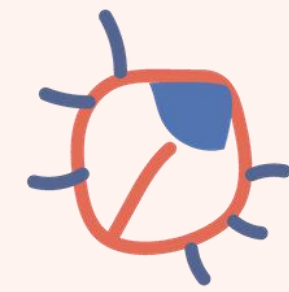
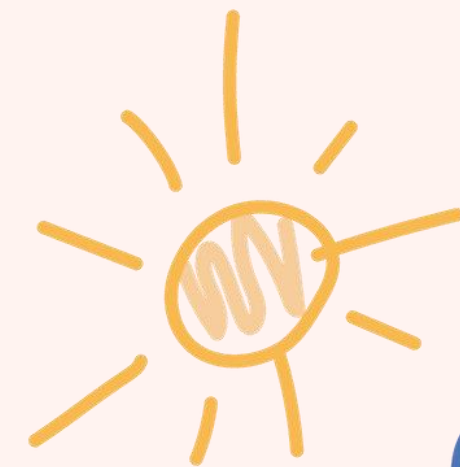


Welcome to Sycamore Lane


Primary Orientation





HRCE Introduction to Grade Primary

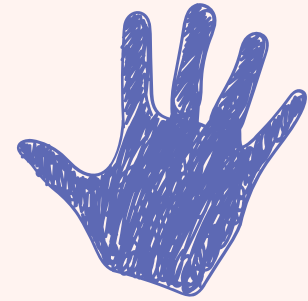


- The Halifax Regional Centre for Education's new [Welcome to Primary](#) booklet is online! Check it out for everything you need to know to help your child transition to school.
 - For more information on resources to help families during the early years, visit [Early Years](#).
- 





Sycamore Lane Staff



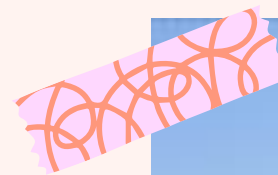
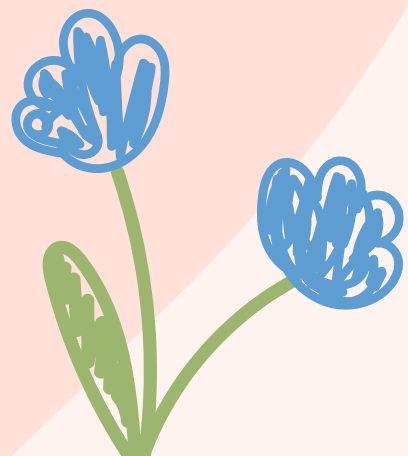
Principal- Shauna Boudreau

Vice Principal- Lindsay Spence

Administrative Assistant- Stephanie Haines

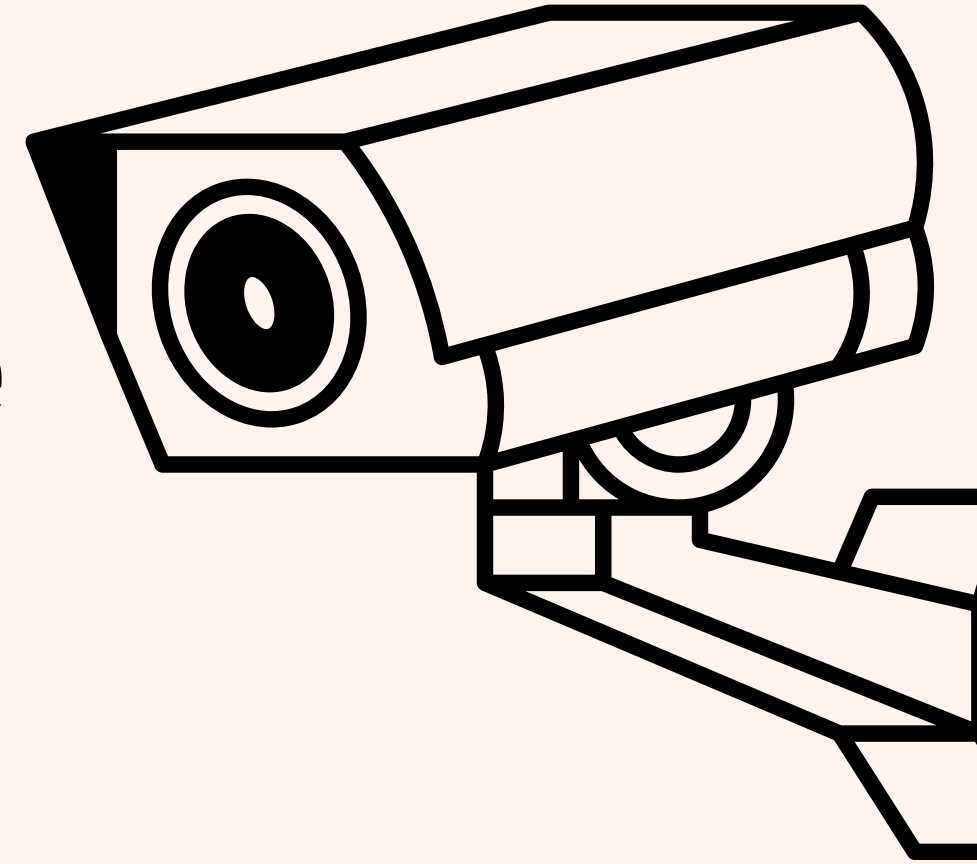
Primary Teachers:

- Kathy Tucker
- Krista Thibodeau



Entering and Exiting SLES

Safety is our #1 priority here at Sycamore



If you arrive to the school during out school day

- press the buzzer and look at the camera
- you will be asked the purpose for your visit
- when buzzed in by administration, immediately enter the office
- you must sign out your child if it is outside of regular dismissal
- only those adults listed in Powerschool will be permitted to pick up your child.



2026-2027 School Year Calendar



Visit HRCE for the 2026-2027 School Calendar.

It will help you keep track of significant dates including the first and last day of school, holidays, breaks, professional development and assessment days.

The first day of school for students is Thursday September 3rd, 2026

The last day of school prior to the Holiday Break is Friday, December 18, 2026
and students will return to school on Monday, January 4th, 2027

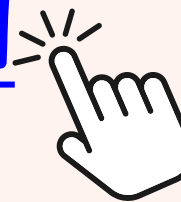
March Break will run from March 8-11, 2027

The last day of school for students is June 30, 2027





VERY IMPORTANT: Safe Arrival



What is Safe Arrival?

Safe Arrival is a system which is performed together with daily school attendance-taking and parent communication to account for any student's unexplained failure to arrive at school. You are asked to report your child's absence in advance whenever possible. If your child is currently in Pre-Primary, you might already have this set up. If your child is not in Pre-Primary, you will need to set this up at the beginning of the school year.

Parents/Guardians are responsible for:

- Their children's safety until they arrive at school during the supervised hours and once they have left school at dismissal time.
- Reinforcing with their child(ren) that it is a family responsibility for the child(ren) to report on time to school.
- Communicating all planned student absences or lateness to the school in a timely manner prior to the start of the school day.
- Providing the school with up-to-date contact information throughout the school year
- Receiving telephone calls to confirm student safety.
- Responding promptly to messages left regarding student safety.

Using SchoolMessenger to Report Student Absence

Parents and guardians can report students absent prior to the start of the school day using SchoolMessenger.

Call 1-833-582-6940 Automated phone system You may be prompted to enter a phone number you provided to the school.	Website https://sishrsb.ednet.ns.ca/public/ SchoolMessenger icon in PowerSchool You will need your portal username and password, or email address you provided to the school.	App SchoolMessenger Download  You will need your portal username, or email address you provided to the school.
--	---	---

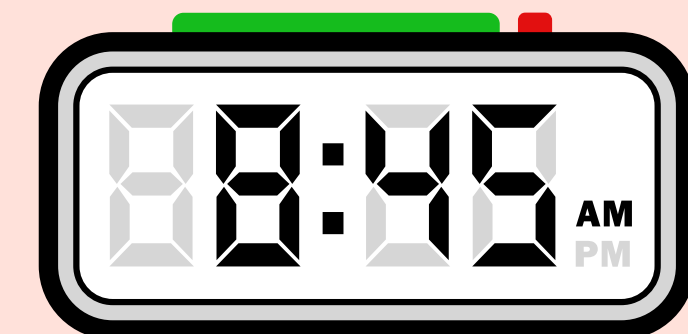


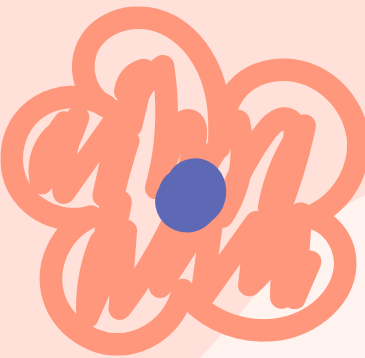
Safe Arrival Continued

- Inclimate weather days: Safe Arrival must still be used if you choose to keep your child home when the school is open.

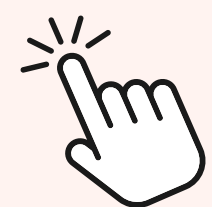


- The cut-off time is 30 minutes after the school's start time. After 8:45am, you will not be able to edit/delete the absence. If there is a change to the absence after the cut-off time, please contact the school.





Nova Scotia Student Attendance and Engagement Policy



NOVA SCOTIA

Student Attendance and Engagement Policy

Effective Date: October 1, 2017

Last Updated: August 2023

1. Introduction

This policy recognizes that regular attendance at school supports greater **student success and achievement**. Attendance supports student learning and promotes a sense of responsibility that students will need as they transition from the school system to post-secondary studies and/or the workforce.

Promoting and supporting regular student attendance is a **shared responsibility**. All partners, including students, parents/guardians, teachers, principals, Regional Centres for Education (RCEs), the Conseil scolaire acadien provincial (CSAP), and community partners must work together.

This policy is to be applied in a **fair and equitable** way and is not intended to punish or marginalize students for circumstances beyond their control. The policy provides **flexibility** by allowing teachers and principals to use their professional judgment to determine when there may be extenuating circumstances affecting a student's attendance. In these cases, the school will work with the student and/or their family to respond with the appropriate incentives and supports, and/or to develop accountability mechanisms that recognize the student's unique situation.



5%+ absent or late
Contact from your child's teacher



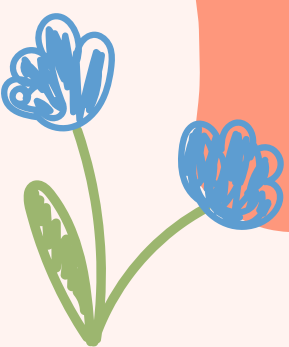
Threshold #1
10%+ absent or late
Contact from Administration



Threshold #2
15%+ absent or late
Further contact from Administration



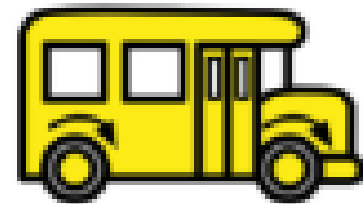
Threshold #3
20%+ absent or late
Additional contact and attendance support



Student Transportation



Bus Reminders



get on the bus 	find an empty seat 	sit down 	do not stand up
hands to yourself 	talk quietly 	listen to adults 	get off the bus

Please review student transportation regarding busing (linked above) [Register](#) – HRCE’s Transportation Team will email you info this summer.

[Behaviour](#) – Review expectations with your child. The school bus and bus stop are both extensions of the school itself and behaviour expectations stay the same! If there are concerns please let us know.

[Routes](#) – Are currently being updated so stay tuned later in July.

[Changes](#) – You must inform the school of changes to after school or bus routines.

Please note that bus drivers only take students who are on the bus manifest



Clothing

Having proper clothing each day can make a world of difference in how your child's day goes.

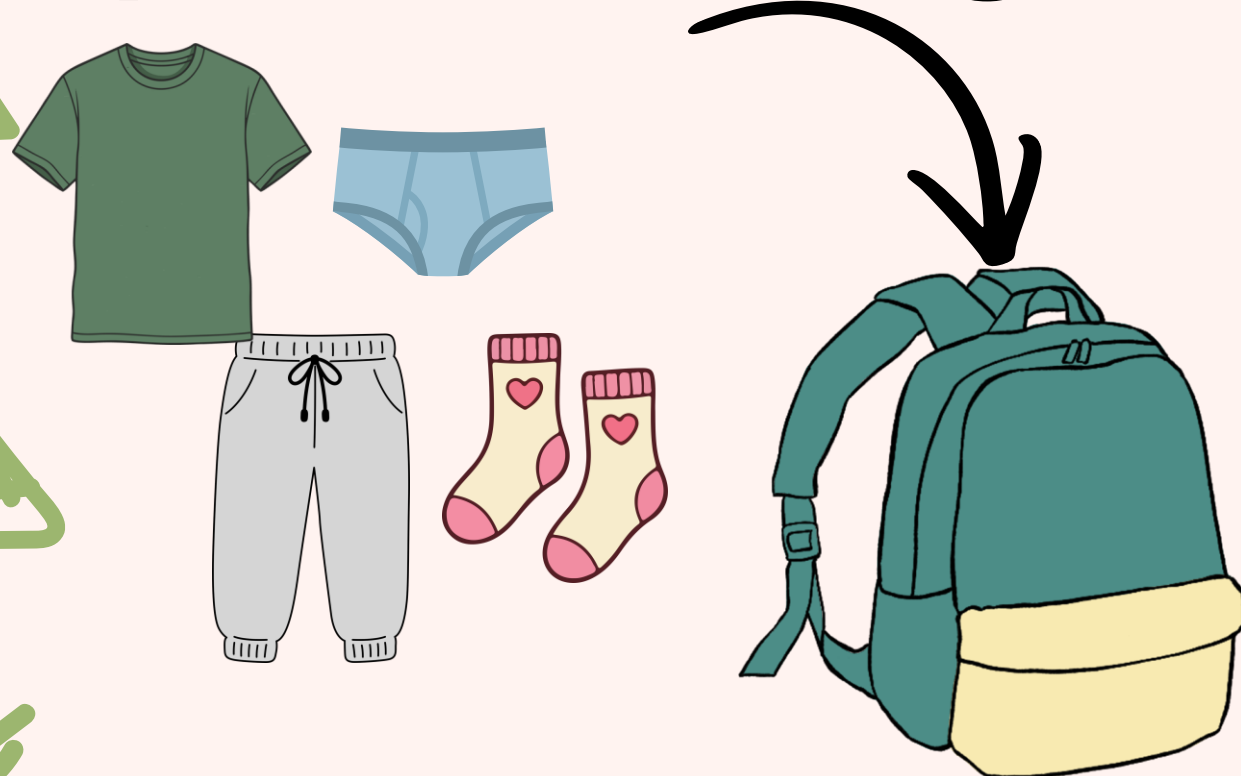
Footwear – Students will need two pairs of shoes (Velcro please), one for outside and one for inside.

Jacket – please send one appropriate for the weather.

Change of Clothes – Always have a change of clothes in the backpack.

Labels – It is helpful if you label everything with your child's name!

Spare Clothing



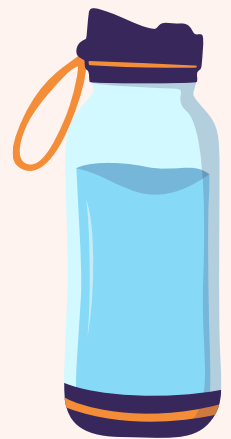


Food

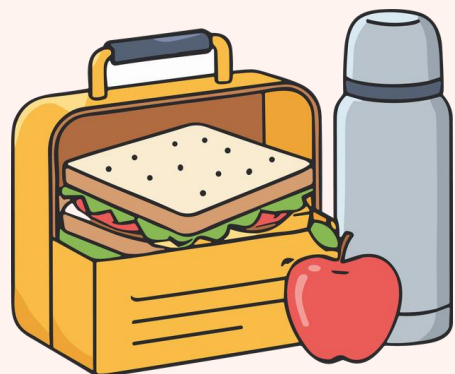
Recess – Pack small, nutritious snacks.

Sharing – Students are not permitted to share food in order to prevent food allergy emergencies and to respect food choices for all families

Nut Free – There are students at our school who have life threatening allergies to peanuts and other nut products. Allergies to peanuts or nut products are potentially fatal. An allergic person, either through consuming, touching or even smelling the product, can go into anaphylactic shock or die within minutes. Please refrain from bringing peanut butter, peanuts and other products containing nuts to school.



Drinks– Reuseable water bottle required. Please note: water is the drink permitted in the class all throughout the day and is encouraged as the only drink during lunch/snack



Canada's Food Guide is a great resource to support healthy eating!

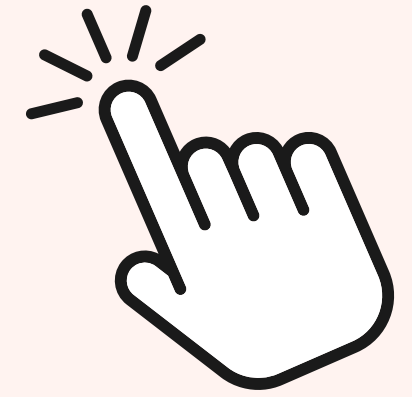
Nova Scotia School Lunch Program

A screenshot of the Nova Scotia School Lunch Program website. The page has a light blue background. On the left, there is a text area with the title "Nova Scotia School Lunch Program" and a paragraph describing the program. Below the text is a white dropdown menu labeled "Select your region" and a yellow "Order Now" button. On the right side of the screenshot, there is a photograph of a plate of food, including white rice, a meat and vegetable stir-fry, and a side of green broccoli.

Nova Scotia School Lunch Program

The Nova Scotia School Lunch Program is a provincial lunch program that offers public school students across Nova Scotia nutritious lunch every school day. Ordering will open on Friday mornings and close on Wednesday at noon.

Select your region



**School lunches are ordered online
and creating an account is quick
and easy!**

School Supplies

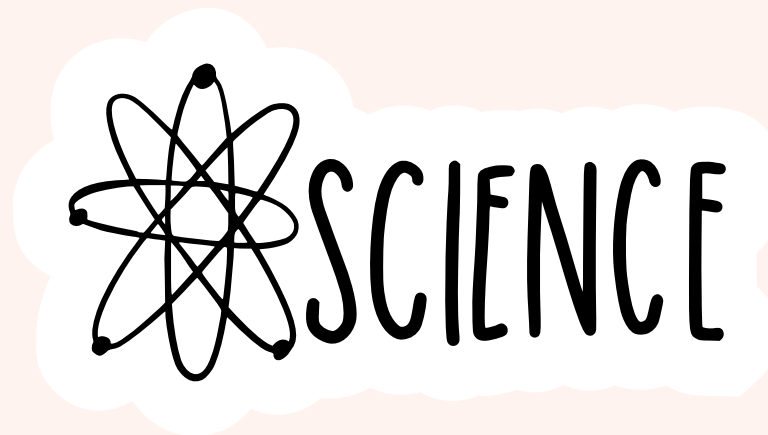
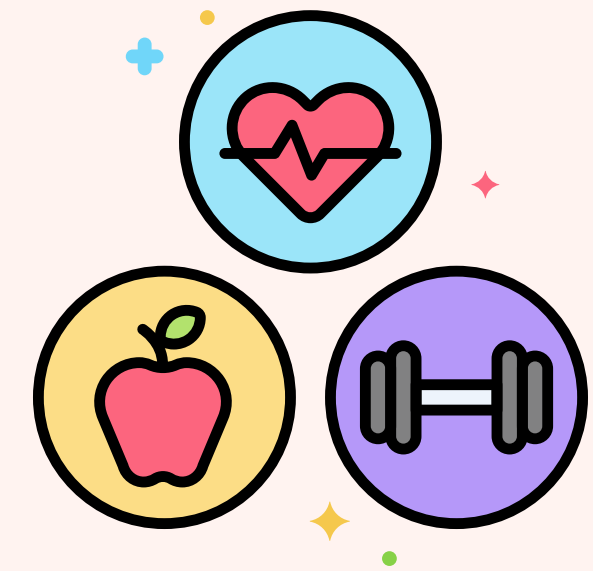


School Schedule

bell schedule

Arrival	7:55-8:15am
Morning Instruction Begins	8:15 am
O'Canada and Announcements	8:20 am
Recess A	9:45 - 10:00 am
Recess B	10:00 - 10:15 am
Lunch A Eat / Lunch B Out	11:45 - 12:15 pm
Lunch B Eat / Lunch A Out	12:15 - 12:45 pm
Afternoon Instruction Begins	12:45 pm
Dismissal	2:15 pm

Integrated Curriculum



Students will learn a variety of topics through an integrated curriculum. An integrated curriculum develops skills and understandings that overlap across subjects. It enables students to see and experience connections amongst subjects.

Language Arts and Math are the two main subject areas. Other subject areas such as Health, Social Studies, Science and Art are an integrated part of the Language and Math programs. There will not be separate report card comments for these areas, but they will be explored in the day-to-day learning.

Language Arts

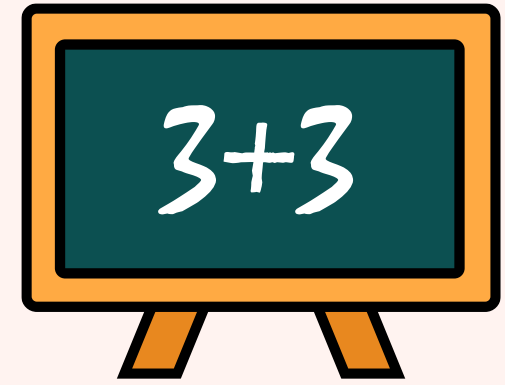
Language arts also encompasses a wide variety of activities such as:

- letter and sound practice
- browsing and reading different types of books
- writing for different reasons
- center activities
- playing make believe
- asking and answering questions

The list goes on and on! Students will always be expected to try their best and be open to trying new activities and experiences.



Mathematics



Students will develop skills and concepts through daily number routines, problem solving activities, and the use of manipulative materials. Students will view themselves as mathematicians who notice and think about numbers and patterns in their world. They will come to recognize and understand the relevance of math in our daily lives.

The Math curriculum focuses on four main strands:

Number Sense:

Develop an in depth understanding of numbers 1-10, count forwards from 1-20 and backwards from 10-1, represent numbers 1 -10 in two parts (4 and 3 make 7)

Patterning:

- Copy, create and extend repeating patterns

Measurement:

- Compare and order objects based on length, mass, volume, and capacity.

Identify: shorter/longer, lighter/heavier, holds less/holds more, bigger/smaller

Geometry:

- Build, sort and describe 3D objects



Physical Education and Music

Grade Primary students participate in Physical Education classes three times a week. Sneakers are a must for each gym period. Velcro closures are wonderful for small children; they are independent when putting sneakers on and there is no fear of tripping over laces. Shorts and short-sleeve t-shirts, if worn, should be worn under street clothes to facilitate ease of changing at gym time. Please be sure that your child's clothing is comfortable and easy to run and jump in everyday, not just Phys Ed days. There is a large portion of school time devoted to active learning, which demands lots of movement.



Music classes are provided for elementary students twice a week by the music teacher. The children enjoy having many singing games, which help introduce important concepts such as beat, rhythm, slow, fast, and high and low. Musical instruments are often used to reinforce these concepts. Movement and dance are also integral to this program. Our main goal is for children to enjoy all musical experiences and have fun while learning.



Library

Once a week, students go to the school library. They borrow and return books at this time. Please try to read stories brought home by your child. Sharing books with your child creates a love of literature in your child as well as a desire to learn and read. Children also need their parents' help in remembering to return the library books each week



First Day of School

- Students registered for the bus will be picked up at their stop. Please see [BusPlanner](#) for more information on busing.
- Walkers will be met at the school by their teacher. More information on drop off locations will be provided by your child's teacher when they make contact in late August.
- Dismissal:
 - Students registered for the bus will board buses at the 2:15 pm dismissal time and will be dropped off at their stop.
 - Walkers will be picked up at at the back door of the school. Primary teachers will walk their students out to meet their parents.



Communications

Communication from the school

- Check our school website regularly at [Sycamore Lane Elementary](#)
- Important News and Information
- School monthly newsletters
- School email address
- All information will be sent from the school to your email address.
- Download the messenger app to view messages



Communication from your child's teacher

- weekly newsletters with what has been going on in class
- reminders and due dates
- Message bag to and from school daily



Volunteers

Would you consider volunteering on our field trips?

We ♥ our
Volunteers

Mandatory requirements (valid for 3 years and kept on file):

- Vulnerable Sector Screening (Police Check)
- Child Abuse Registry

We are bound by policy and strict ratios on field trips and cannot make them happen without volunteers! P-2= 1:5, P-3= 1:8

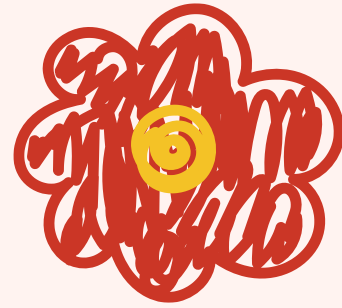
This year, field trips included trips to:

- Halifax Regional Arts Pottery Lab
- Shubenacadie Wildlife Park
- Halifax Public Library- Sackville Branch
- Bella Rose Arts Centre

LET'S GO

ADVENTURE





Any Questions?

